



**Heather Garth  
Primary Academy**  
Stars Aiming High

# SEND Policy and Information Report

## Policy Review Details

This review date is a guideline only and if circumstances or recommendations change then the policy will be reviewed and amended as appropriate.

**This policy will be reviewed by the Governing Body on an annual basis**

**Date of Issue: Summer 2024**

**Chair of Governors Signature**

**Headteacher Signature**

**Date of next review: Summer 2025**



## Contents

|   |  |
|---|--|
| 1. What types of SEN does the school provide for? .....   |  |
| 2. Which staff will support my child, and what training have they had? .....  |  |
| 3. What should I do if I think my child has SEN? .....  |  |
| 4. How will the school know if my child needs SEN support? .....  |  |
| 5. How will the school measure my child's progress? .....   |  |
| 6. How will I be involved in decisions made about my child's education? .....   |  |
| 7. How will my child be involved in decisions made about their education? .....   |  |
| 8. How will the school adapt its teaching for my child? .....   |  |
| 9. How will the school evaluate whether the support in place is helping my child? .....   |  |
| 10. How will the school resources be secured for my child? .....  |  |
| 11. How will the school make sure my child is included in activities alongside pupils who don't have SEND? .....                    |  |
| 12. How does the school make sure the admissions process is fair for pupils with SEN or a disability? .....                         |  |
| 13. How does the school support pupils with disabilities? .....   |  |
| 14. How will the school support my child's mental health and emotional and social development? .....                                |  |
| 15. What support will be available for my child as they transition between classes or settings or in preparing for adulthood? ..... |  |
| 16. What support is in place for looked-after and previously looked-after children with SEN? .....                                  |  |
| 17. What should I do if I have a complaint about my child's SEN support? .....  |  |
| 18. What support is available for me and my family? .....   |  |
| 19. Glossary .....  |  |
| 20. Links to other policies and documents .....   |  |

---

Dear Parents and Carers,

The aim of this information report is to explain how we implement our SEND policy. In other words, we want to show you how SEND support works in our school.

If you want to know more about our arrangements for SEND, read our SEND policy and Information Report.

You can find it on our website: <https://www.heathergarth.org>

You can also ask a member of staff to make a copy/send you the policy. We can also make adaptations to the print should this be required.

**Note:** If there are any terms we've used in this information report that you're unsure of, you can look them up in the Glossary at the end of the report.

### 1. What types of SEN does the school provide for?

Our school provides for pupils with the following needs:

| AREA OF NEED                               | CONDITION  |
|--|--|
| <b>Communication and interaction</b>       | Autism spectrum disorder   |
|  | Speech and language difficulties   |
| <b>Cognition and learning</b>              | Specific learning difficulties, including dyslexia, dyspraxia, dyscalculia |
|  | Moderate learning difficulties   |
|  | Severe learning difficulties   |
| <b>Social, emotional and mental health</b> | Attention deficit hyperactive disorder (ADHD)                              |
|  | Attention deficit disorder (ADD)   |
| <b>Sensory and/or physical</b>             | Hearing impairments  |
|  | Visual impairment  |
|  | Multi-sensory impairment   |
|  | Physical impairment  |

## **2. Which staff will support my child, and what training have they had?**

Your child is supported in the first instance by the class teacher and teaching assistant. All teachers and teaching assistants have regular SEND training during the year, as part of our commitment to continuous professional development. Should further advice / support be considered necessary, your child may be supported by outside agencies with your consent.

### **Our Special Educational Needs Co-ordinator, or SENCO**

Our SENCO is Mrs Louise Dunwell

She is a qualified teacher. She has eleven years experience in this role and have worked as Key Stage Two class teacher, PPA Cover and SENDCo.

She achieved the National Award in Special Educational Needs Co-ordination in 2014.

She is allocated 1.5 days per week to manage SEN provision.

### **Class teachers**

All of our teachers receive in-house SEN training, and are supported by the SENCO to meet the needs of pupils who have SEN. We have completed a variety of training such as Dyslexia and ASD.

### **Teaching assistants (TAs)**

We have a team of eleven TAs, including early year practitioners and higher-level teaching assistants (HLTAs) who are trained to deliver SEN provision.

We have eleven teaching assistants who are trained to deliver interventions such as Speech Therapy and Language Support packages.

Recently, the TAs have been trained in Little Wandle, Spelling Shed, Bench Marking, Language Link and delivering Maths Interventions.

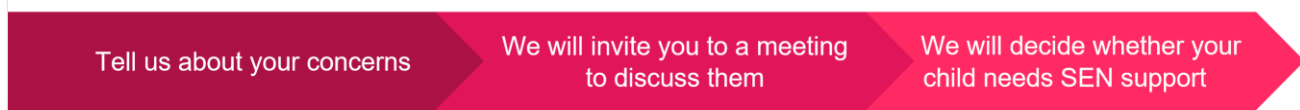
### **External agencies and experts**

Sometimes we need extra help to offer our pupils the support that they need. Whenever necessary we will work with external support services to meet the needs of our pupils with SEN and to support their families. These include:

- Speech and language therapists
- Educational psychologists
- Occupational therapists
- GPs or paediatricians
- School nurses
- Child and adolescent mental health services (CAMHS)
- Education welfare officers
- Social services and other LA-provided support services
- CAF/CASS
- Voluntary sector organisations

### 3. What should I do if I think my child has SEN?

In the first instance, please speak with your child's class teacher. Please book an appointment to see them to discuss any concerns you may have.



If you think your child might have SEN, the first person you should tell is your child's teacher.

Speak with your child's class teacher to arrange an appointment.

They will pass the message on to our SENCO, Mrs Dunwell who will be in touch to discuss your concerns.

You can also contact the SENCO directly via the school office 01709 894149.

We will meet with you to discuss your concerns and try to get a better understanding of what your child's strengths and difficulties are.

Together we will decide what outcomes to seek for your child and agree on next steps.

We will make a note of what's been discussed and add this to your child's record. You will also be given a copy of this.

If we decide that your child needs SEN support, we will formally notify you in writing and your child will be added to the school's SEND register.

### 4. How will the school know if my child needs SEN support?

All our class teachers are aware of SEN and are on the lookout for any pupils who aren't making the expected level of progress in their schoolwork or socially. This might include Reading, Writing and Mathematics.

If the teacher notices that a pupil is falling behind, they try to find out if the pupil has any gaps in their learning. If they can find a gap, they will give the pupil extra tuition to try to fill it. Pupils who don't have SEN usually make progress quickly once the gap in their learning has been filled.

If the pupil is still struggling to make the expected progress, the teacher will talk to the SENCO, and will contact you to discuss the possibility that your child has SEN.

The SENCO will observe the pupil in the classroom and in the playground to see what their strengths and difficulties are. They will have discussions with your child's teacher/s, to see if there have been any issues with, or changes in, their progress, attainment or behaviour. They will also compare your child's progress and development with their peers and available national data.

The SENCO will ask for your opinion and speak to your child to get their input as well. They may also, where appropriate, ask for the opinion of external experts such as a speech and language therapist, an educational psychologist, or a paediatrician.

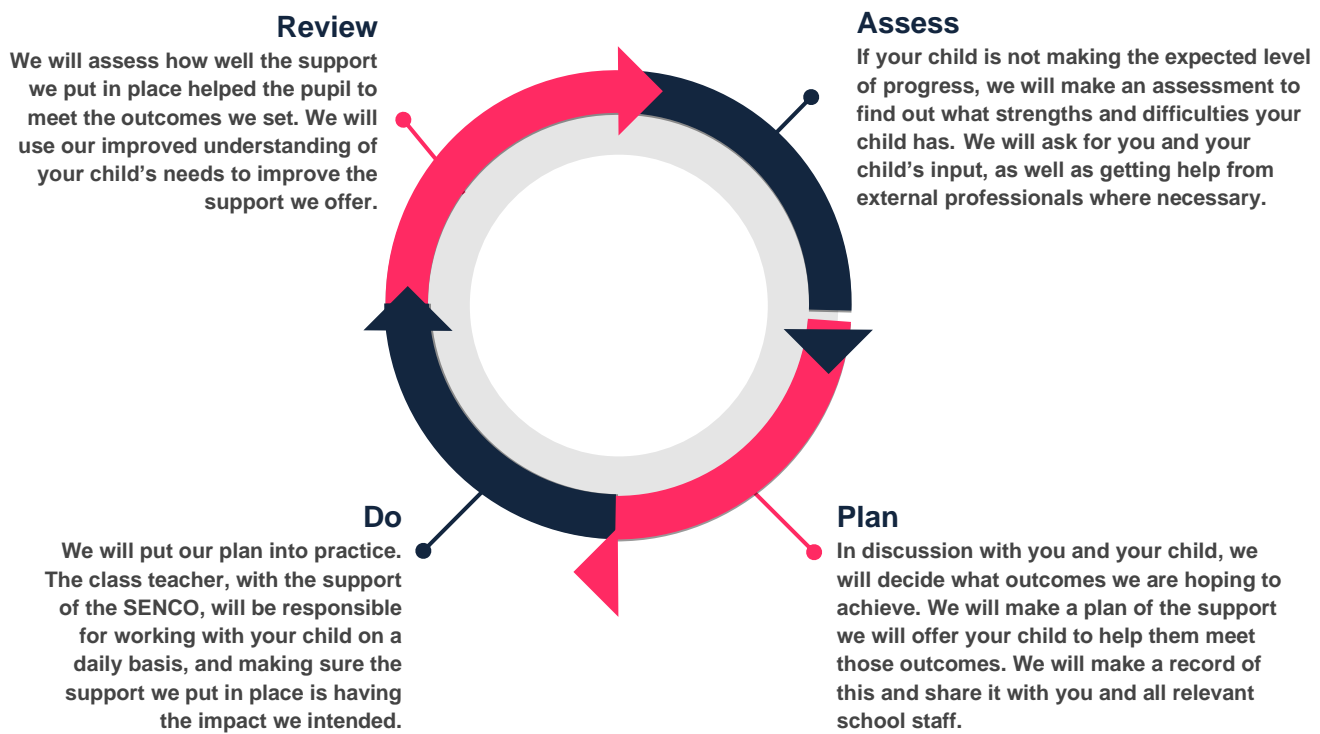
Based on all of this information, the SENCO will decide whether your child needs SEN support. You will be told the outcome of the decision in writing.

If your child does need SEN support, their name will be added to the school's SEN register, and the SENCO along with the class team will work with you to create a SEN support plan for them.

### 5. How will the school measure my child's progress?

We will follow the 'graduated approach' to meeting your child's SEN needs.

The graduated approach is a 4-part cycle of **assess, plan, do, review**.



As a part of the planning stage of the graduated approach, we will set outcomes that we want to see your child achieve.

Whenever we run an intervention with your child, we will assess them before the intervention begins. This is known as a 'baseline assessment'. We do this so we can see how much impact the intervention has on your child's progress.

We will track your child's progress towards the outcomes we set over time and improve our offer as we learn what your child responds to best.

This process will be continual. If the review shows a pupil has made progress, they may no longer need the additional provision made through SEN support. For others, the cycle will continue and the school's targets, strategies and provisions will be revisited and refined.

### 6. How will I be involved in decisions made about my child's education?

We will provide termly reports on your child's progress.

Your child's class/form teacher will meet you three times a year to:

- Set clear outcomes for your child's progress
- Review progress towards those outcomes
- Discuss the support we will put in place to help your child make that progress
- Identify what we will do, what we will ask you to do, and what we will ask your child to do

The SENCO may also attend these meetings to provide extra support.

We know that you're the expert when it comes to your child's needs and aspirations. So, we want to make sure you have a full understanding of how we're trying to meet your child's needs, so that you can provide insight into what you think would work best for your child.

We also want to hear from you as much as possible so that we can build a better picture of how the SEN support we are providing is impacting your child outside of school.

If your child's needs or aspirations change at any time, please let us know right away so we can keep our provision as relevant as possible.

After any discussion we will make a record of any outcomes, actions and support that have been agreed. This record will be shared with all relevant staff, and you will be given a copy.

If you have concerns that arise between these meetings, please contact your child's class teacher. You may speak with them directly to arrange a meeting or contact the school office: 01709 894149.

## **7. How will my child be involved in decisions made about their education?**

The level of involvement will depend on your child's age, and level of competence. We recognise that no two children are the same, so we will decide on a case-by-case basis, with your input.

We may seek your child's views by asking them to:

- Attend meetings to discuss their progress and outcomes
- Prepare a presentation, written statement, video, drawing, etc.
- Discuss their views with a member of staff who can act as a representative during the meeting
- Complete a survey

## **8. How will the school adapt its teaching for my child?**

We have an Accessibility Plan which explains the extent to which disabled pupils can participate in the curriculum.

Your child's teacher is responsible and accountable for the progress and development of all the pupils in their class.

High-quality teaching is our first step in responding to your child's needs. We will make sure that your child has access to a broad and balanced curriculum in every year they are at our school.

We will differentiate (or adapt) how we teach to suit the way the pupil works best. There is no 'one size fits all' approach to adapting the curriculum, we work on a case-by case basis to make sure the adaptations we make are meaningful to your child.



These adaptations may include:

- Differentiating our curriculum to make sure all pupils are able to access it, for example, by grouping, 1-to-1 work, adapting the teaching style or content of the lesson, etc.
- Differentiating our teaching, for example, giving longer processing times, pre-teaching of key vocabulary, reading instructions aloud, etc.
- Adapting our resources and staffing
- Using recommended aids, such as laptops, coloured overlays, visual timetables, larger font, etc.
- Teaching assistants supporting pupils on a 1-to-1 basis
- Teaching assistants will support pupils in small groups when further support is needed for Reading, Writing or Mathematics

We may also provide the following interventions: SALT, Socially Speaking, Language Link, Maths Support

| <b>AREA OF NEED</b>                        | <b>CONDITION</b>  | <b>HOW WE SUPPORT THESE PUPILS</b>   |
|--|---|--|
| <b>Communication and interaction</b>       | Autism spectrum disorder  | Visual timetables<br>Social stories  |
|  | Speech and language difficulties  | Speech and language therapy  |
| <b>Cognition and learning</b>              | Specific learning difficulties, including dyslexia, dyspraxia and dyscalculia | Writing slope<br>Coloured teaching slides<br>Coloured paper exercise books<br>Number lines |
|  | Moderate learning difficulties  | Support from agencies as required<br>Classroom adaptations as required                     |
|  | Severe learning difficulties  | Support from agencies as required<br>Classroom adaptations as required                     |
| <b>Social, emotional and mental health</b> | ADHD, ADD   | Quiet workstation  |
|  | Adverse childhood experiences and/or mental health issues                     | Nurture groups   |

|                                |                          |   |
|--------------------------------|--------------------------|---|
| <b>Sensory and/or physical</b> | Hearing impairment       | Support from HI team<br>Classroom adaptations as required |
|                                | Visual impairment        | Enlarged fonts  |
|                                | Multi-sensory impairment | Support from agencies as required                         |
|                                | Physical impairment      | Adaptations as required                                   |

These interventions are part of our contribution to Barnsley’s local offer  
<https://www.barnsley.gov.uk/services/children-families-and-education/children-with-special-educational-needs-and-disabilities-send/>

**9. How will the school evaluate whether the support in place is helping my child?**

We will evaluate the effectiveness of provision for your child by:

- Reviewing their progress towards their goals each term
- Reviewing the impact of interventions after approximately six weeks
- Using pupil questionnaires
- Monitoring by the SENCO
- Using provision maps to measure progress
- Holding an annual review (if they have an education, health and care (EHC) plan)

**10. How will the school resources be secured for my child?**

It may be that your child’s needs mean we need to secure:

- Extra equipment or facilities
- More teaching assistant hours
- Further training for our staff
- External specialist expertise

If that’s the case, we will consult with external agencies to get recommendations on what will best help your child access their learning.

The school will cover up to £6,000 of any necessary costs. If funding is needed beyond this, we will seek it from our local authority.

**11. How will the school make sure my child is included in activities alongside pupils who don’t have SEND?**

There are no barriers to our pupils with SEND enjoying the same activities as other pupils in our school, including physical activities.

All of our extra-curricular activities and school visits are available to all our pupils, including our before and after-school clubs.

All pupils are encouraged to go on our school trips, including any residential trips.

All pupils are encouraged to take part in sports day, school plays and special workshops.

No pupil is ever excluded from taking part in these activities because of their SEN or disability and we will make whatever reasonable adjustments are needed to make sure that they can be included.

## **12. How does the school make sure the admissions process is fair for pupils with SEN or a disability?**

- All prospective pupils whose EHC plan names the school will be admitted before any other places are allocated
- Our oversubscription criteria avoid unfairly disadvantaging prospective pupils with a disability or special educational needs

Please refer to the Barnsley Admissions who manage our FS2 to Y6 admissions

<https://www.barnsley.gov.uk/services/children-families-and-education/schools-and-learning/school-admissions-and-transfers/>

## **13. How does the school support pupils with disabilities?**

Pupils with disabilities are supported according to their need.

> Disabled pupils are not treated less favourably than other pupils

> Disabled pupils are supported according to their need to access our school, including the provision of auxiliary aids and services

Please see our Accessibility plan (available on our website).

## **14. How will the school support my child's mental health and emotional and social development?**

We provide support for pupils to progress in their emotional and social development in the following ways:

- Pupils with SEN are encouraged to be part of our different School Councils and all after school clubs to promote teamwork/building friendships
- We provide extra pastoral support for listening to the views of pupils with SEN by encouraging all pupils to name staff they choose to support them in school on their 'Helping Hand'
- We run a nurture breakfast clubs for pupils who need extra support with social or emotional development
- We have a 'zero tolerance' approach to bullying. We prevent bullying in the school by engaging the children in games during unstructured times, encouraging dancing, large

games, skipping and quiet activities such as reading outside. We also have 'Anti Bullying Week' and we have regular taught PSHE lessons dedicated to this throughout school.

## **15. What support will be available for my child as they transition between classes or settings or in preparing for adulthood?**

### **Between years**

To help pupils with SEND be prepared for a new school year we:

- Ask both the current teacher and the next year's teacher to attend final meeting of the year when the pupil's SEN is discussed
- Schedule lessons with the incoming teacher towards the end of the summer term
- We may send a new class 'Passport' home with photographs of the new staff and classroom

### **Between schools**

When your child is moving on from our school, we will ask you and your child what information you want us to share with the new setting.

### **Between Phases (for Primary Schools)**

The SENCO of the secondary school will come into our school for a meeting with our SENCO. They will discuss the needs of all the children who are receiving SEN support.

Pupils will be prepared for the transition by:

- Practising with a secondary school timetable
- Learning how to get organised independently
- Plugging any gaps in knowledge

### **Between phases (for Secondary schools)**

The SENCO of the primary school meets with our SENCO to discuss the needs of the incoming pupils near the end of the summer term.

We arrange meetings with the parents of incoming pupils to discuss how we can best welcome their child into our community.

We set up new pupils with a buddy from the year above to help them get settled in and make friends.

## **16. What support is in place for looked-after and previously looked-after children with SEN?**

Mrs Carr (Assistant Head Teacher) will work with Mrs Dunwell our SENCO, to make sure that all teachers understand how a looked-after or previously looked-after pupil's circumstances and their SEN might interact, and what the implications are for teaching and learning.

Children who are looked-after or previously looked-after will be supported much in the same way as any other child who has SEND. However, looked-after pupils will also have a personal

education plan (PEP). We will make sure that the PEP and any SEN support plans or EHC plans are consistent and complement one another.

### **17. What should I do if I have a complaint about my child's SEN support?**

Complaints about SEN provision in our school should be made to the class teacher/ SENDCo/ headteacher in the first instance. They will then be referred to the school's complaints policy.

If you are not satisfied with the school's response, you can escalate the complaint. In some circumstances, this right also applies to the pupil themselves.

To see a full explanation of suitable avenues for complaint, see pages 246 and 247 of the [SEN Code of Practice](#).

If you feel that our school discriminated against your child because of their SEND, you have the right to make a discrimination claim to the first-tier SEND tribunal. To find out how to make such a claim, you should visit: <https://www.gov.uk/complain-about-school/disability-discrimination>. To see a full explanation of suitable avenues for complaint, see pages 246 and 247 of the [SEN Code of Practice](#).

You can make a claim about alleged discrimination regarding:

- Admission
- Exclusion
- Provision of education and associated services
- Making reasonable adjustments, including the provision of auxiliary aids and services

Before going to a SEND tribunal, you can go through processes called disagreement resolution or mediation, where you try to resolve your disagreement before it reaches the tribunal.

To find out about disagreement resolution and mediation services in our local area, [www.justice.gov.uk/tribunals/SEND](http://www.justice.gov.uk/tribunals/SEND).

You can request mediation by contacting email [info@collismediationltd.com](mailto:info@collismediationltd.com) or telephone 07715958290

### **18. What support is available for me and my family?**

If you have questions about SEND, or are struggling to cope, please get in touch to let us know. We want to support you, your child and your family.

To see what support is available to you locally, have a look at Barnsley's local offer. Barnsley Authority publishes information about the local offer on their website:

Our local special educational needs and disabilities information advice and support services (SENDIASS) organisations are:

<https://www.barnsley.gov.uk › special-educational-need>

Local charities that offer information and support to families of children with SEND are:

[Chilypep](#)

[https://chilypep.org.uk › uploads › 2021/05](https://chilypep.org.uk/uploads/2021/05)

Victim **Support**. SENDIASS. Mencap,. Learning Disability. Services, **Send** Youth Forum. DIAL.

National charities that offer information and support to families of children with SEND are:

- › [IPSEA](#)
- › [SEND family support](#)
- › [NSPCC](#)
- › [Family Action](#)
- › [Special Needs Jungle](#)

## 19. Glossary

- › **Access arrangements** – special arrangements to allow pupils with SEND to access assessments or exams
- › **Annual review** – an annual meeting to review the provision in a pupil's EHC plan
- › **Area of need** – the 4 areas of need describe different types of needs a pupil with SEND can have. The 4 areas are communication and interaction; cognition and learning; physical and/or sensory; and social, emotional and mental health needs.
- › **CAMHS** – child and adolescent mental health services
- › **Differentiation** – when teachers adapt how they teach in response to a pupil's needs
- › **EHC needs assessment** – the needs assessment is the first step on the way to securing an EHC plan. The local authority will do an assessment to decide whether a child needs an EHC plan.
- › **EHC plan** – an education, health and care plan is a legally-binding document that sets out a child's needs and the provision that will be put in place to meet their needs.
- › **First-tier tribunal/SEND tribunal** – a court where you can appeal against the local authority's decisions about EHC needs assessments or plans and against discrimination by a school or local authority due to SEND
- › **Graduated approach** – an approach to providing SEN support in which the school provides support in successive cycles of assessing the pupil's needs, planning the provision, implementing the plan, and reviewing the impact of the action on the pupil
- › **Intervention** – a short-term, targeted approach to teaching a pupil with a specific outcome in mind
- › **Local offer** – information provided by the local authority which explains what services and support are on offer for pupils with SEN in the local area
- › **Outcome** – target for improvement for pupils with SEND. These targets don't necessarily have to be related to academic attainment
- › **Reasonable adjustments** – changes that the school must make to remove or reduce any disadvantages caused by a child's disability

- **SENCO** – the special educational needs co-ordinator
- **SEN** – special educational needs
- **SEND** – special educational needs and disabilities
- **SEND Code of Practice** – the statutory guidance that schools must follow to support children with SEND
- **SEN information report** – a report that schools must publish on their website, that explains how the school supports pupils with SEN
- **SEN support** – special educational provision which meets the needs of pupils with SEN
- **Transition** – when a pupil moves between years, phases, schools or institutions or life stages

## 20. Links with other policies and documents

- Accessibility plan
- Behaviour policy
- Equality information and objectives
- Supporting pupils with medical conditions policy
- Attendance policy
- Safeguarding / child protection policy
- Complaints Procedures